

FIBREGLASS AXIAL ROOF FAN



FEATURES

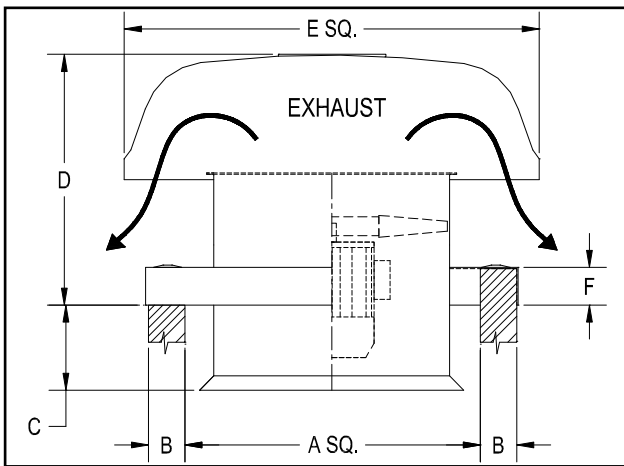
- The AXC-R series has been tested to meet the air performance test ISO 5801, DIN 24163 & AMCA 210-99.
- The fibre glass series of Axial Roof Fan are fitted with adjustable pitch enabling wide performance range to be obtained from any unit.
- Designed for exhaust applications, handling clean or toxic fumes.
- Galvanised steel base, cowls are fibreglass designed.
- The axial impellers are adjustable pitch manufactured in GRP or aluminium to suit the application.
- Butterfly damper / shutter are optional items.

MOTOR

Type – squirrel cage induction motor.

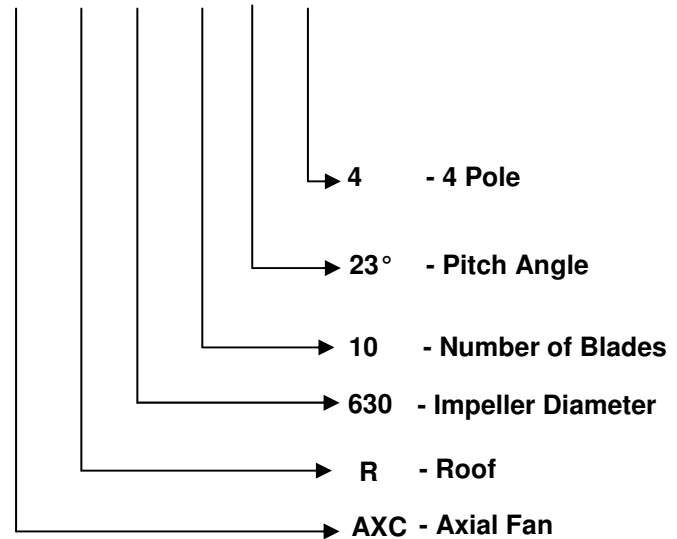
Electricity supply – 220/1/50 or 415/3/50

DIMENSIONS



ORDERING CODE

AXC – R - 630 – 10 / 23° - 4

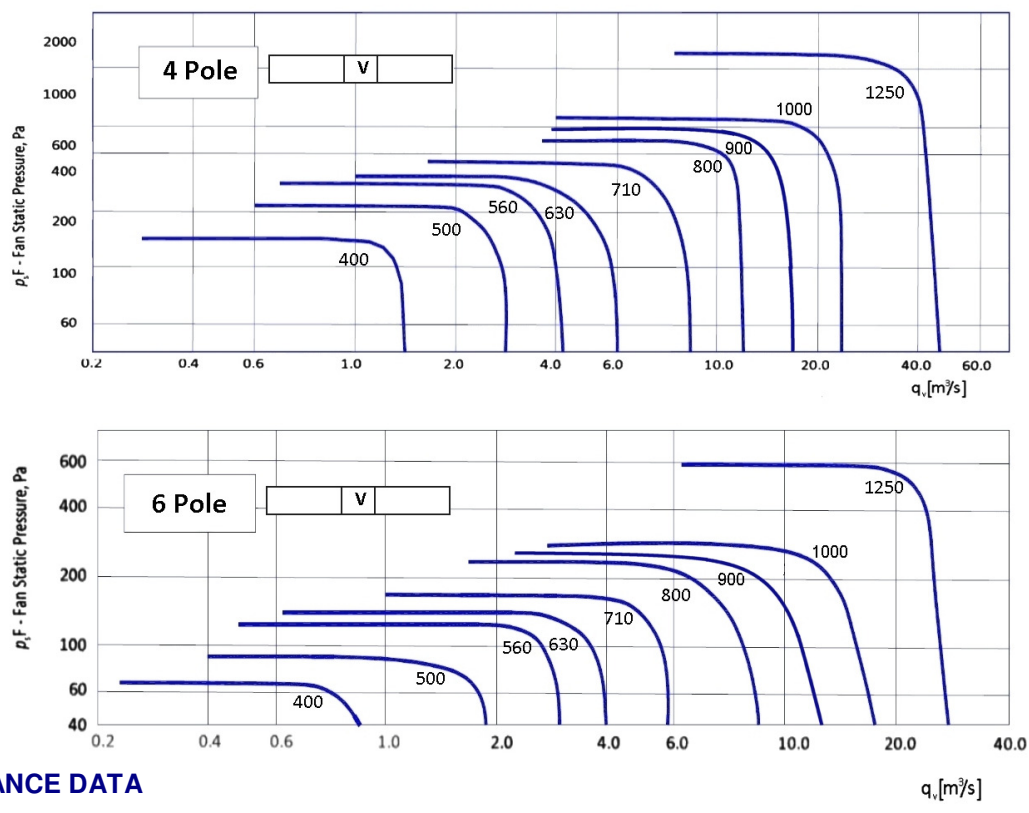


IN METRIC, mm

AXC MODEL	A	B	C max.	D	E	F
AXC-R 400	510	50	245	430	770	80
AXC-R 500	670	50	365	530	890	80
AXC-R 560	670	50	365	530	890	80
AXC-R 630	780	100	365	580	1180	80
AXC-R 710	780	100	365	580	1180	80
AXC-R 800	880	100	530	685	1395	85
AXC-R 900	1080	100	530	725	1640	85
AXC-R 1000	1080	100	550	725	1640	85
AXC-R 1250	1370	100	550	800	1920	85

FIBREGLASS AXIAL ROOF FAN

PERFORMANCE CURVES



PERFORMANCE DATA

4 POLE

MODEL	SPEED(RPM)	MOTOR (Kw)	Sound level (dBA)
AXC-R 400	1450	0.37	64
AXC-R 500	1450	0.75	67
AXC-R 560	1450	1.5	72
AXC-R 630	1450	2.2	74
AXC-R 710	1450	7.5	74
AXC-R 800	1450	7.5	84
AXC-R 900	1450	7.5	85
AXC-R 1000	1450	18.5	86
AXC-R 1250	1450	30	86

6 POLE

MODEL	SPEED(RPM)	MOTOR (Kw)	Sound level (dBA)
AXC-R 400	960	0.37	56
AXC-R 500	960	0.37	59
AXC-R 560	960	0.37	61
AXC-R 630	960	1.1	64
AXC-R 710	960	2.2	64
AXC-R 800	960	2.2	71
AXC-R 900	960	2.2	73
AXC-R 1000	960	7.5	78
AXC-R 1250	960	11	78